

# Route 94X Clarksville Express

Proposed New Service

Public Meetings – April 24, 2012



# Agenda

- RTA - MTA Background
- Proposed New Service to Clarksville
- Clarksville Transit System Connecting Service
- Your Comments and Suggestions



# RTA - MTA Background

- RTA provides five regional commuter bus routes, one shuttle, and the Music City Star commuter rail
  - Route 89X Springfield/Joelton Express
  - Route 91X Franklin/Brentwood Express
  - Route 92X Gallatin/Hendersonville Express
  - Route 93 West End Shuttle
  - Route 95X Spring Hill Express
  - Route 96X Nashville/Murfreesboro Relax & Ride



# RTA - MTA Background

- Provides rideshare services through vanpool program
- MTA contracted to manage RTA
- MTA operates 41 local bus routes, BusLink on-demand service, and AccessRide paratransit service



# Proposed Route

## 94X Clarksville Express



- In partnership with Clarksville Transit System (CTS)
- Awarded funding through the Congestion Mitigation and Air Quality (CMAQ) grant
- CTS will provide local bus service to and from the Park-n-Ride lot that connects with Clarksville Express schedule



# Proposed Route

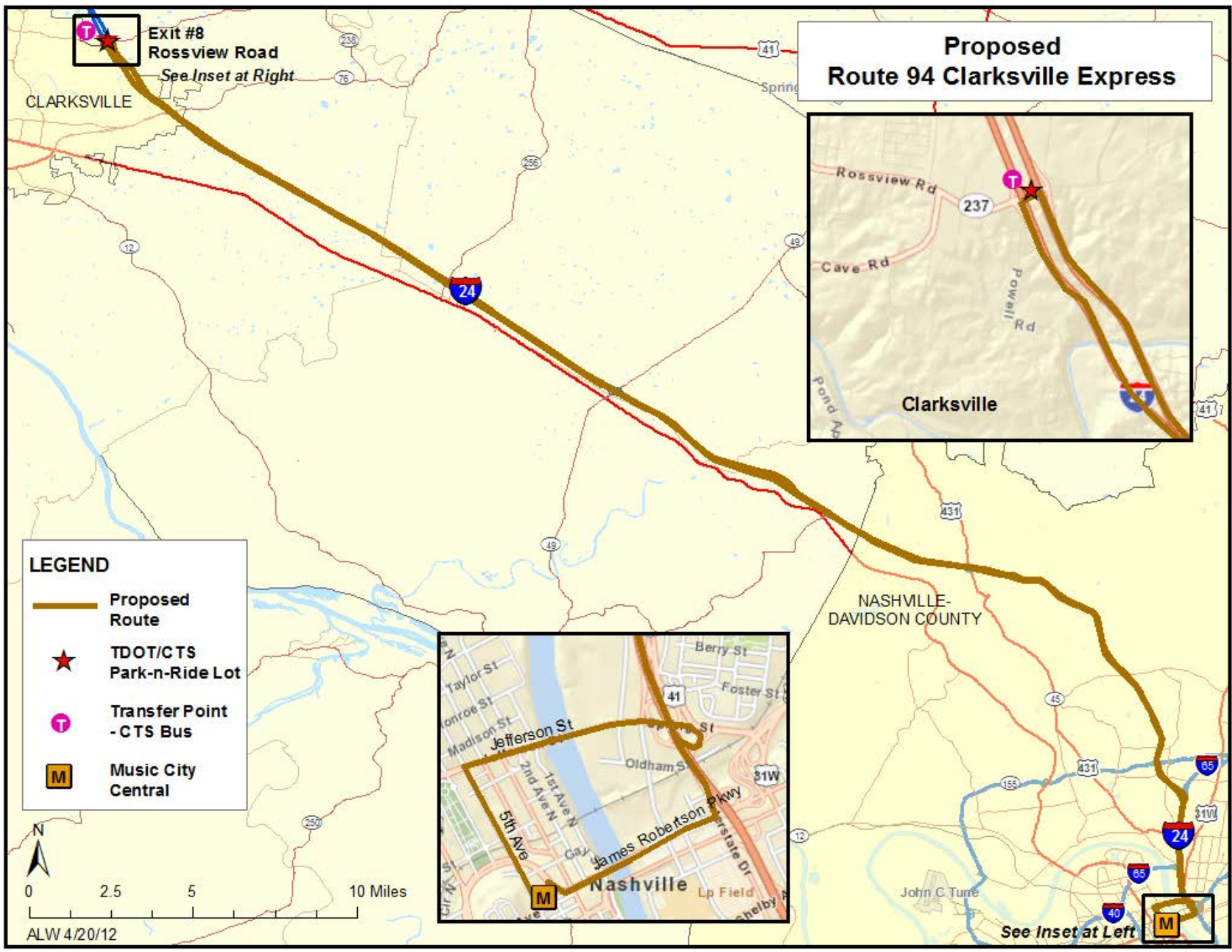
## 94X Clarksville Express



- RTA Fares Apply
  - 1 Ride - \$4
  - 20 Ride Pass - \$70
- CTS Fares Apply for Connecting Service
  - See CTS website for more information
  - <http://www.ridects.com>
- Proposed Start Date - June 1, 2012



# Proposed Route 94 Clarksville Express



- LEGEND**
- Proposed Route
  - TDOT/CTS Park-n-Ride Lot
  - Transfer Point - CTS Bus
  - Music City Central

0 2.5 5 10 Miles  
ALW 4/20/12

# Proposed Schedule

## Route 94X Clarksville Express

### WEEKDAYS *to Nashville*

Rossview Road Exit #8 Park-n-Ride	Music City Central
5:52 AM	6:45 AM
6:50 AM	7:45 AM
5:15 PM	6:10 PM

### WEEKDAYS *from Nashville*

Music City Central	Rossview Road Exit #8 Park-n-Ride
5:45 AM	6:40 AM
4:10 PM	5:05 PM
5:00 PM	5:55 PM



= Reverse Commute Trips from Nashville to Clarksville





# Clarksville Transit System

## Route 812 Exit 8 Express (Connecting to RTA route)

### WEEKDAYS

Depart Transit Center	Arrive Rossvie Road Exit #8 Park-n-Ride	Depart Rossvie Road Exit #8 Park-n-Ride	Arrive Transit Center
5:30 AM	5:50 AM	5:55 AM	6:15 AM
6:20 AM	6:40 AM	6:50* AM	7:10 AM
4:45* PM	5:05 PM	5:15 PM	5:35 PM
5:35 PM	5:55 PM	6:00 PM	6:20 PM



\* = Connect with Reverse Commute Trips



# Comments & Suggestions

## Many ways to provide your input!

- Complete the Public Comment Form
  - Hand-in at the end of the meeting
  - Fax to 615-862-6208
  - Mail to RTA Planning Department, 130 Nestor St., Nashville, TN 37210
- e-mail: [rta@nashville.gov](mailto:rta@nashville.gov)
- Call Customer Care at (615) 862-5950
- Visit [www.RTARelaxandRide.org](http://www.RTARelaxandRide.org)
- **Tell your friends!** You don't have to attend a meeting to provide input.



***Comments due by Monday April 30, 2012***

